

**////// TERRACO®**

**Flexipave®**



For asphalt and  
concrete surfaces



*The House of Scandinavian Finishing Materials*

# Flexipave<sup>®</sup>



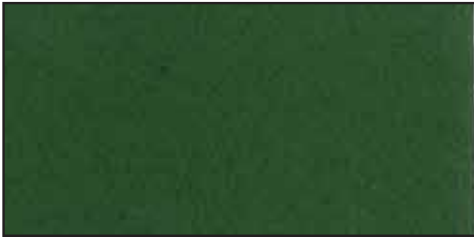
TFC - F15



TFC - F4



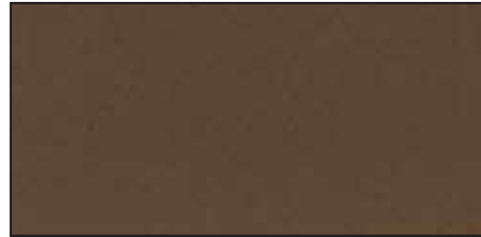
TFC - F7



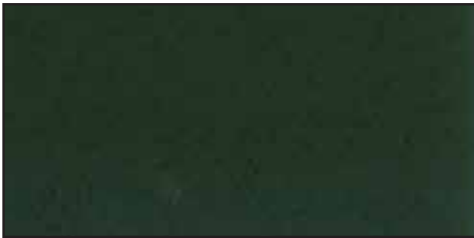
TFC - F1



TFC - F5



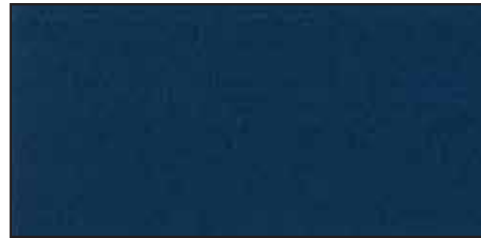
TFC - F8



TFC - F2



TFC - F6



TFC - F9



TFC - F3



TFC - F16



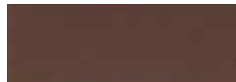
TFC - F10



TFC - F11



TFC - F12



TFC - F13



TFC - F14

Also available in  
White & Textured White

*Now with rubberised basecoats for professional and intermediate level courts*

- **FLEXIPAVE CONCRETE PRIMER**  
Penetrating primer for priming concrete substrates.
- **FLEXIPAVE PATCHING COMPOUND**  
2-pack cementitious / acrylic patching compound for repairing and levelling out any surface unevenness or depressions, up to 15 mm.
- **FLEXIPAVE FILLER**  
Ready-mixed acrylic filling compound for filling minor surface imperfections.
- **FLEXIPAVE RESURFACER**  
Ready-mixed filler for filling or levelling of asphalt substrates.
- **FLEXIPAVE CUSHION COAT**  
0.5mm and 1.0mm rubberised basecoat applied in multilayers to create an under-foot cushion.
- **FLEXIPAVE READYMIXED**  
Ready-mixed acrylic based intermediate textured coating.
- **FLEXIPAVE COATING TEXTURED**  
Acrylic based finishing coat containing non-slip aggregate.
- **FLEXIPAVE COATING SMOOTH**  
Acrylic based finishing coat which is also blended with sand (80-100 mesh) to provide an intermediate coat.
- **FLEXIPAVE LINE PAINT**  
Highly pigmented acrylic based line paint.

IDEAL FOR :

- TENNIS COURTS
- RUNNING TRACKS
- BASKETBALL COURTS
- VOLLEYBALL COURTS
- WALKING PATHS
- SCHOOL PLAYGROUNDS
- MEDIAN STRIPS
- RECREATIONAL AREAS

- DURABLE** Resists the effects of heavy use
- VERSATILE** For indoor and outdoor applications
- FLEXIBLE** Not affected by temperature extremes
- UV-STABLE** Fade-free colours
- ECONOMICAL** Long life & low consumption

