



[www.terraco.com](http://www.terraco.com)

SWEDEN • UK • IRELAND • RUSSIA • TURKEY • ALGERIA • EGYPT  
JORDAN • UAE • THAILAND • VIETNAM • CHINA • KOREA

Rev. 17/03/2023

////// TERRACO

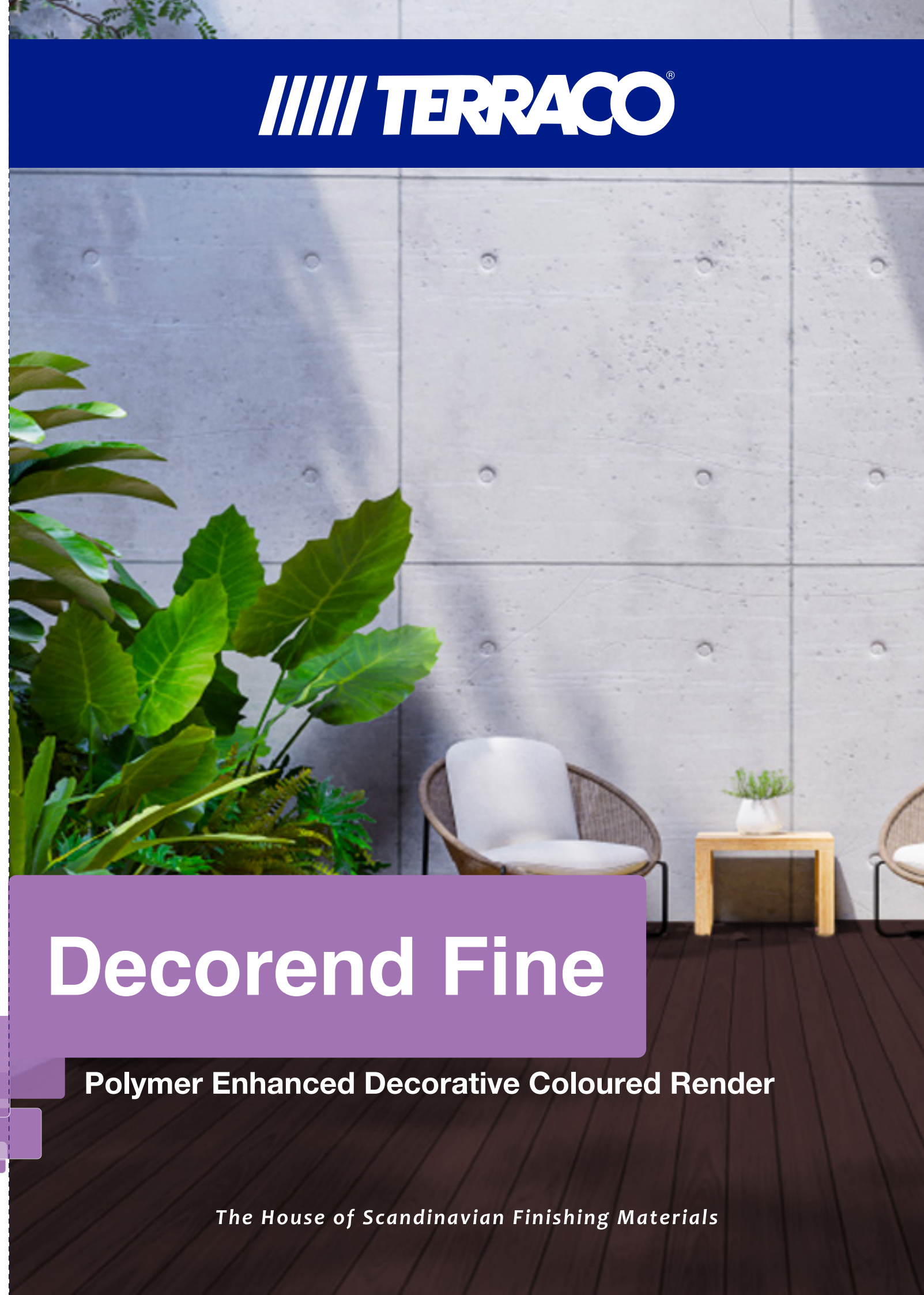
Decorend Fine Polymer Enhanced Decorative Coloured Render

////// TERRACO®

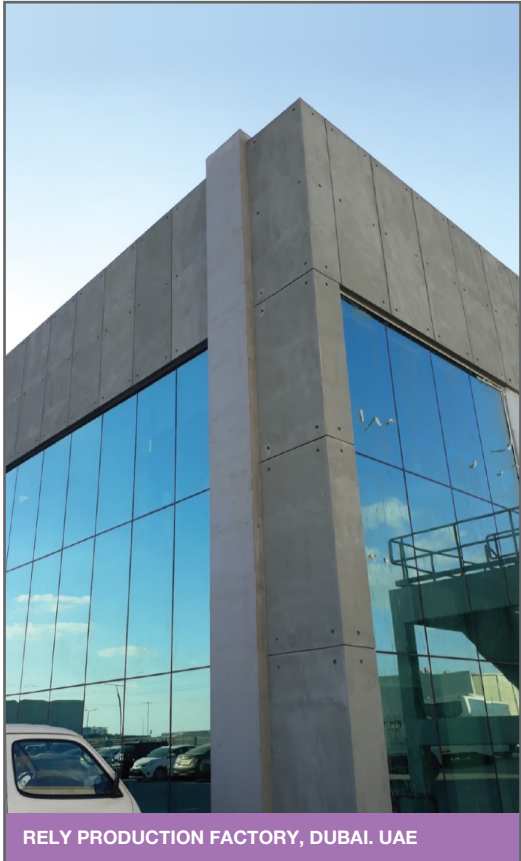
# Decorend Fine

Polymer Enhanced Decorative Coloured Render

*The House of Scandinavian Finishing Materials*







RELY PRODUCTION FACTORY, DUBAI, UAE

## Decorend Fine

### POLYMER ENHANCED DECORATIVE COLOURED RENDER

Decorend is a superior quality, decorative, economical coloured rendering, designed for long-life protection of exterior facades. To satisfy a variety of requirements, two finishes are available, Decorend Fine and Decorend Coarse. Decorend is manufactured in natural colours and provides a double tone finish.

#### EXTERIOR & INTERIOR APPLICATION



#### FEATURES AND BENEFITS:

- Long-life protection of exterior facades
- Superior weather and pollution-resistant properties
- Environmentally friendly
- Highly resistant to staining and scratching
- Non-combustible: ASTM E84 class A (Tested & Certified)
- In-built flexibility to cover minor substrate, cracks and defects

#### AREAS OF USE:

Concrete, Cement rendering, Lightweight concrete, Fair-faced block-work, On Expanded Polystyrene (for features)

### DECOREND FINE - Standard Colours



Colour: DCF-003



Colour: DCF-004



Colour: DCF-010



Colour: DCF-021



Colour: DCF-022



Colour: DCF-025

\*Note: Other customised colours are available on request - MOQ will be applicable.



Colour: DCF-001



Colour: DCF-024

#### Product Details:

<b>Coverage:</b>	Decorend Fine: 1.40 kg/m <sup>2</sup> /mm
<b>Tools:</b>	☁️ Spray gun    🛠️ Trowel
<b>Mixing ratio:</b>	Decorend Fine: 5.5 to 6ltr of water / 25kg bag
<b>Packaging:</b>	25kg paper bags
<b>Shelf life:</b>	6 months in original unopened bags
<b>Application method:</b>	<ul style="list-style-type: none"> <li>• Ensure the substrate is clean, smooth and level. Repair all imperfections using <b>Terramix range</b></li> <li>• Apply one coat of <b>Terrabond A</b> prior to application of <b>Decorend Fine</b></li> <li>• Apply 1<sup>st</sup> thin coat of <b>Decorend Fine</b> by spray gun or manually with a trowel or spatula and level smooth</li> <li>• Apply 2<sup>nd</sup> coat of <b>Decorend Fine</b> once 1<sup>st</sup> coat is firm and dry</li> </ul> <p><b>Note:</b>  <b>Topcoat recommended: Terraco Silcoat WB / Silcoat EX200</b> (wet on wet application of multiple coats recommended). If topcoat not applied after 24 hrs of application, cure the surface for 3 days using a light water spray.</p>

#### Recommended Topcoat:

Terraco Silcoat WB / Silcoat EX200

**Silcoat range** is a specially formulated water repellent for building facades which is based on innovative waterborne technology.

**Colour:** Milky white

**Packaging:** 4kg and 20kg jerrican

**Tools:** ☁️ Spray    🛠️ Brush

**Package:**



Please note:

As the Decorend product range is formulated using a combination of natural raw materials, colour variances may occur. Should you wish to minimise these colour differences, it is recommended that the applicator uses products from the same batch. Deep shades in cementitious dry powder products results in patchy look due to blooming effect when it is applied smooth & levelled. Inconsistency in water content & mixing time are also contributing factor for colour variation.

Technical Data Sheets and Material Safety Data Sheets are available from your Terraco representative or on [www.terraco.com](http://www.terraco.com). Although every precaution has been taken to ensure the accuracy of the colours and textures represented herein they should be considered indicative. Products containing natural aggregates may be susceptible to colour variation and we recommend that you order sufficient quantity for the complete project at one time. Terraco does not warrant the accuracy of the information provided herein and all information is subject to change without notice. © All rights reserved. Terraco Holdings Ltd.