

The logo features five vertical white bars of varying heights on the left, followed by the word "TERRACO" in a bold, white, sans-serif font. A registered trademark symbol (®) is located at the top right of the word.

# ||||| TERRACO®



## RENOVATION & RETROFIT SOLUTIONS

EIFS | Architectural Coatings | Waterproofing | Roof Coatings  
Tiling | Concrete Repair | Sports Flooring Systems | Landscaping

*The House of Scandinavian Finishing Materials*

# / CONTENT

- 03** EIFS
- 05** Architectural Coatings
- 07** Waterproofing
- 08** Roof Coatings
- 09** Tiling
- 10** Concrete Repair
- 11** Sports Flooring Systems
- 12** Landscaping

Terraco's Renovation & Retrofit Solutions are designed for a broad range of needs. Each individual system is specifically engineered to revitalize building structures both functionally and aesthetically.

## **Why Renovate?**

There are several reasons as to why Renovation & Retrofit Solutions are required. It could be something simple as giving the buildings a facelift or something serious as preserving the structural integrity of an asset. Another important reason could be to improve energy efficiency of a building to save long term on energy costs.

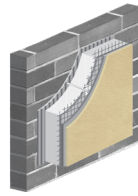
A good renovation & retrofit solution can reduce operating costs and ensure a long life for the building.





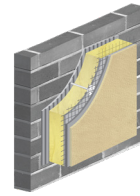
## Our Product Range

Terraco's three primary Exterior Insulation Finishing Systems use various insulation materials to meet different climatic conditions and the energy efficient building requirements of today's modern society.



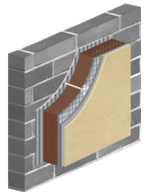
**TERRACO** eifs  
**ALPHA**

Uses fire retardant Expanded Polystyrene (EPS) or Graphite Enhanced Polystyrene (G-EPS) as the insulation material.



**TERRACO** eifs  
**PERMA**

Uses non-combustible Mineral Wool (MW) as the insulation material.



**TERRACO** eifs  
**NOVA**

Uses fire retardant Phenolic boards as the insulation material.

Note: Terraco EIFS Nova is certified in Terraco UAE and Terraco Korea only.

## Exterior Insulation Finishing Systems (EIFS)

EIFS systems are energy efficient thermal wrapping applied to the exterior surfaces of a building which are then finished with a long-life, decorative and protective wall coatings. In the industry these systems are also known as Exterior Thermal Insulation Composites Systems (ETICS) or Exterior Wall Insulation (EWI).

Terraco EIFS provide excellent energy saving compared to all other models of retrofit. It is a quick and easy solution for retrofitting. These systems are excellent in functionality and are aesthetically pleasing. In addition to this, these systems provide world class fire safety with international certification.

Terraco's EIFS systems are a preferred choice to make older buildings more energy efficient, while simultaneously allowing these buildings to be rejuvenated and given a facelift that will stand the test of time. The versatility and durability of Terraco EIFS makes it ideal for urban regeneration projects.



## Low Rise Buildings

The EIFS Nova system is perfectly suited for low rise buildings. The phenolic boards are compact and easy to install which make them perfectly suited for low rise retrofit projects.

## Simple System

The EIFS Nova system makes renovations simple regardless of climatic conditions. It does not have cold bridging concerns in colder climates. This system can be installed easily without complicated detailing.

## International certificates

- ▶ EOTA ETAG 004 (EU)
- ▶ BBA Agrément Certificate (UK)
- ▶ NSAI Agrément Board Certificate (Ireland)
- ▶ FED Specification (US ARMY)
- ▶ Russian National Standard: Technical Certificate
- ▶ P.R. China Certified System
- ▶ TSE Standard (Turkey)
- ▶ Romania National Institute (INCERC)
- ▶ UAE / UAQ Civil Defence

## Alternatives of EIFS

There are various alternative models for retrofit. EIFS systems have clear benefits in comparison to these alternatives and are the best solution for retrofit projects. The table below highlights the risks and inconveniences of the alternatives to EIFS.

	Risks & Inconveniences of alternatives to EIFS	Benefits of EIFS compared to alternatives
<b>Interior Insulation</b>	<ul style="list-style-type: none"> <li>Reduces indoor space</li> <li>Occupants need to move out during installation</li> <li>Creates thermal bridges which can transfer heat</li> </ul>	<ul style="list-style-type: none"> <li>Does not reduce indoor space since it is installed on the exterior façade</li> <li>Occupants do not need to move out during installation</li> <li>Does not create thermal bridges</li> </ul>
<b>Aluminum Composite Panels (ACP)</b>	<ul style="list-style-type: none"> <li>Fire Safety risk since it uses flammable base materials</li> <li>Limited colour options</li> <li>Poor energy efficiency</li> <li>Poor insulation</li> <li>Less design flexibility</li> </ul>	<ul style="list-style-type: none"> <li>Uses fire retardant base materials</li> <li>Virtually unlimited colour and finish options</li> <li>Extremely good energy efficiency with a saving of up to 50%</li> <li>Extremely good heat and cold insulation</li> <li>Very high design flexibility</li> </ul>
<b>Autoclaved Lightweight Concrete (ALC)</b>	<ul style="list-style-type: none"> <li>Poor water vapour resistance</li> <li>Surface plaster can crack easily</li> <li>Brittle</li> <li>Limited thermal efficiency</li> </ul>	<ul style="list-style-type: none"> <li>Excellent resistance to water vapour and liquid water</li> <li>Excellent crack resistance with flexible exterior coatings</li> <li>Excellent Durability</li> <li>Excellent thermal efficiency</li> </ul>
<b>Fiber Cement</b>	<ul style="list-style-type: none"> <li>Absorbs and retains moisture</li> <li>Poor energy efficiency</li> <li>Difficult to install</li> <li>Requires regular maintenance</li> <li>Joints tend to crack due to thermal movement</li> </ul>	<ul style="list-style-type: none"> <li>Good vapour permeability does not retain moisture</li> <li>Excellent energy efficiency</li> <li>Easy to install and repair</li> <li>Requires very little maintenance</li> <li>Does not crack regardless of climatic variations</li> </ul>
<b>Cavity Wall Insulation</b>	<ul style="list-style-type: none"> <li>Difficult to ensure cavity is filled. Hence can cause thermal bridging</li> <li>Easy damp penetration</li> <li>Can cause mould growth indoors</li> </ul>	<ul style="list-style-type: none"> <li>No thermal bridging possibility</li> <li>Resistant to damp penetration</li> <li>Does not cause mould indoors</li> </ul>

## Benefits of EIFS

- ▶ Large savings – Substantial reduction of energy use for cooling/heating
- ▶ Increases property value – Rejuvenation of old facades at economic costs
- ▶ Large reduction in harmful CO2 emissions
- ▶ Convenience for occupants, as they do not need to vacate the building
- ▶ Design Flexibility – With various insulation media and finish options
- ▶ Excellent indoor living comfort with no variances in temperature
- ▶ Long lasting – Internationally certified system, designed to last the lifetime of the building
- ▶ Excellent weather & impact resistance – Adheres to ETAG 004 standards



**Energy Saving**



**Quick & Easy installation**



**Fire Resistance Certified**



**Excellent for Urban Regeneration**



Terraco EIFS Alpha was used at Trilogi Apartments in South Africa. The system resulted in good energy saving and better indoor comfort



## Our Product Range

Terracoat Textured Coatings are an extensive collection of elegant textures developed to withstand extreme climatic conditions. These distinct finishes are extremely tough, have excellent impact & abrasion resistance and excellent weather & UV resistance.

**Terracoat Textured Coatings**



**TERRACOAT EXCEL**  
Alpine scratch finish



**TERRACOAT GRANULE FILLED**  
Filled granular finish



**TERRACOAT DÉCOR**  
High build texture



**TERRACOAT SUPERFINE**  
Sandy texture



**TERRACOAT SUEDE**  
Seamless, smooth

Available in any colour in the Terraco Fan Deck

Façade renovation is important for the preservation of any building. The 'skin' of the building deteriorates over a period of time and must be reconditioned for aesthetic and safety purposes.

Terraco textured coatings are restoration solutions that give customers the creative freedom to achieve a design that meets their specific criteria. These coatings are climate appropriate, structurally sound and visually appealing. Terraco's decorative texture coatings, stone coatings, and mineral-based coatings give unparalleled versatility and diversity, providing a spectrum of variation in colour, texture, effect and style.

Each of these products are available in acrylic, silicone, and elastomeric grades to meet every performance requirement.



▶ All Terracoat Silicone grades have:



**Excellent dirt pick-up resistance**

▶ All Terracoat Elastomeric grades are:



**Excellent for renovation & retrofit**

---

▶ Acrylic grades have 10 year performance:



▶ Silicone & Elastomeric grades have 15 year performance:

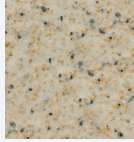


Terralite Stone Coatings are created with naturally graded stone aggregates encapsulated in clear resin binder that gives a natural stone effect finish. These unique and exquisite stone simulation coatings are weather resistant, abrasion resistant and UV stable.

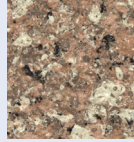
### Terralite Stone Coatings



**TERRALITE FINE**  
Dressed Granite Effect



**TERRALITE STONE**  
Hammer Finished Granite Effect



**TERRALITE ARTSTONE MULTICOLOUR**  
Realistic Granite Effect

Available in a bespoke range of colours

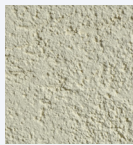
Available in a standard colour range of 20 colours

Terraco's mineral based coatings are polymer modified coatings that can give a traditional heritage appearance or a modern and contemporary look. These texture finishes are economical to use with its on-site mixing properties and controlled setting times.

### Terol Mineral Based Coatings



**TEROL DÉCOR**  
Scratch finish



**TEROL GRANULE**  
Even, Attractive, Granular look



**TEROL SAHARA**  
Fine textured, random patterned, granular finish

Available in any colour in Terraco Colours Fan Deck

### Topcoats

Terraco's clear and pigmented range of topcoats further enhance and protect the architectural coatings from harsh weather and dust. The pigmented topcoats provide a vast range of colour options.



## AREAS OF USE

Terraco's Architectural Coatings are designed for exterior facades and surfaces of buildings such as commercial and industrial complexes, office projects, factories, hospitals and housing developments. It can be used on surfaces of concrete, cement rendering, lightweight concrete, fairfaced stonework, brickwork, blockwork and other commonly used substrates. Terracoat performs equally well on interior surfaces also and is widely used as a decorative ceiling and wall finish.

For application and usage information, please refer to the Technical Data Sheet.

### Benefits of Architectural Coatings

- ▶ Covers undulations, damages and cracks
- ▶ Tough & Durable - Lasts long in all weather conditions
- ▶ Excellent impact & abrasion resistance
- ▶ Excellent weather & UV resistance



*Extremely tough and durable*



*Excellent impact and abrasion resistance*



*Excellent weather and UV resistance*



Terracoat Textures were applied at Fairmont Hotel & Serviced Apartments in UAE. The texture provided an enhanced aesthetic for this five star hotel resort.



# WATERPROOFING

Water leakage and seepage are some of the most common problems faced by buildings regardless of their geography. Water leaks can cause significant damage to concrete, gypsum boards, wood, metal and other structural materials which if left untreated can lead to severe loss of property and pose a threat to occupants. Waterproofing solutions can be used in various areas of a building depending on the performance requirement.

## Wet Rooms, Balconies & Terraces

These areas are exposed to extensive amounts of water sprays, showers and drips. In any building, these areas require attention to detail. If not waterproofed correctly, a leak can quickly cause extensive damage to floors, ceilings and walls. These areas include bathrooms, toilets, balconies, patios, etc.

## Structural Areas

These areas are prone to direct or indirect water exposure. Structural areas are critical for the integrity and life of buildings and need to be waterproofed properly to maintain stability. These areas include foundations, retaining walls, bridge structures and basements.

## Water Retaining Structures

These structures are in direct contact with stagnant or flowing water. Since the water contact is continuous these structures face a constant risk of leaks and damage. These structures need to be waterproofed efficiently to prevent water loss and mechanical damage. These areas include irrigation canals, swimming pools, water tanks, planter boxes, fish ponds, etc.

## Roofing, Walls & Slabs

These areas are exposed to harsh weather conditions like rains and heat. Along with water damage from showers and sprays, these areas could also be prone to UV related damage with direct exposure to sunlight. The constant expansion and contraction of these areas are the reason why they need to be waterproofed properly with the right solutions. These areas include flat roofs, terraces, exterior walls, roof tiles, etc.

## Our Product Range

Terraco's comprehensive range of environmentally friendly waterproofing products are designed with long-life flexibility in mind, with the ability to adhere to porous and non-porous substrates as well as old surfaces. These products are also suitable for use in areas with extreme climatic conditions.

### Weathercoat Ultra

A highly flexible 2 component waterproofing solution. Best suited for drywall wet areas, exposed flat roofs and areas requiring anti-carbonation.

### Weathercoat Hydra

A highly flexible pigmented 3 component waterproofing solution. Best suited for fountains, drywall wet areas and exposed flat roofs.

### Weathercoat GP

A versatile 2 component general purpose waterproofing solution. Best suited for water tanks, swimming pools and under tile applications.

### Weathercoat HB

A 2 component high build waterproofing solution for vertical surfaces. Best suited for vertical walls, retaining walls and irrigation channels.

### Terracrete

A premium general purpose 2 component waterproofing solution. Best suited for wet rooms, reservoirs and below damp-proof course EIFS.

### Maxicrete

An affordable 2 component waterproofing solution. Best suited for balconies, terraces and planter boxes.

### Terraseal

A 2 component bitumen replacement waterproofing solution. Best suited for facades, stone cladding, foundations and retaining walls.

### Ultracrete

A 2 component positive and negative waterproofing barrier. Best suited for basements, swimming pools and foundations.

### Pluggit

A rapid setting water-stop mortar.

### Silcoat WB

A hydrophobic masonry, stone and concrete treatment.

### Terraproof

A fine powder form cement based waterproofing additive.

## Benefits of Waterproofing Solutions

- ▶ Long life of structures due to protection from water damage
- ▶ Saving on periodic maintenance costs
- ▶ Design flexibility
- ▶ Health and environment friendly



*Long life of structures*



*Saving on maintenance*



*Design flexibility*





## Our Product Range

Roof coatings are complex solutions that require comprehensive consultation with architects and engineers. Terraco specialises in manufacturing a wide range of versatile and eco-friendly specialised waterproofing products for roof applications. This product range provides contractors and builders effective renovation and retrofit solutions for their roof coating requirements.

### Flexicoat

A one pack acrylic roof coating that provides a highly flexible waterproof barrier with excellent weather resistance. It has long life flexibility and is ideally suitable for use in areas with extreme climatic conditions. It is applied by brush or spray and after drying can be walked upon uncovered.

### Maxi Roof

A one pack, economical roof coating. It provides a flexible waterproof barrier with good weather resistance. Maxi Roof Coating has good flexibility and is ideally suited for use in areas with harsh climatic conditions. It is applied by brush, spray or rubber squeegee.

### Flexicoat Thermo

An elastomeric acrylic roof coating with heat reflective technology. It protects the roofs by reflecting up to 90% of the solar heat. It is best suited for areas with extreme sunshine & heat. It can also provide a saving on energy costs for cooling of up to 40%.

### Tileshield

A range of acrylic concrete roof tile coatings which protects tiles from water damage, degradation and biological growth on surfaces.

Roofs are most exposed to harsh climatic conditions. They are the barriers that shield buildings from the unforgiving heat, unrelenting dust, wind gusts, snow and rain. Given this constant beating, roof rehabilitation is a necessary undertaking to avoid roof failure that can cause significant damage to the entire building.

Different types of roof structures demand varying and highly specialized roof coating solutions. For exposed flat roofs, a waterproofing system which is required to perform at optimum levels to withstand harsh weather conditions and UV attack is required. Roof tiles and cement fibre roofing require proper preparation before the application of roof coatings.



## Benefits of Roof Coatings

- ▶ Highly flexible – lasts long in all weather conditions
- ▶ Excellent UV resistance – protects the roof regardless of harsh sunlight
- ▶ Easy to apply – Low skill required. Application can be completed quickly



**Highly Flexible**



**Excellent UV resistance**



**Easy to apply**



Terraco Flexicoat was applied on the many roofs of Jung Ceylon mall in Thailand. The harsh humidity and rain in the country required an efficient long-term solution that would protect the structure from water damage.



# TILING

Damaged tiles reflect poorly on the occupants of a house or facility. Chipped-off and blackened tile edges in the bathroom or hallways gives unpleasant impression. Restoring these areas require high performance, quick set tile adhesives and grouts for durability and faster job completion. Contractors demand stringent performance characteristics of tiling solutions specified for renovating houses, offices and other buildings. Interior designers appreciate discriminating design elements such as colour feature variation that elevates visual appeal of remodeled floors and walls.

Tiles come in many different types - ceramic, porcelain, glass, cement, etc. And choosing the kind of tile adhesive and grout is equally important as selecting the right kind of tile for walls or floors for any renovation project.



## Our Product Range

Terraco offers a complete range of quick-set tiling solutions for renovations. Terraco's tiling solutions for tile-on-tile application are perfectly suited for renovation projects. The solutions are designed to quick-set in a short span of time which ensures the floors and walls are back in service within the day. These high-performance tiling adhesives and grouts are manufactured in compliance with European Standards EN12004 / EN12002 (adhesives) and EN13888 (grouts). These products passed all tests required for C2, C2 S1 and C2 S2 classification standards.

### Terrafix (W23, W33, W43)

A range of polymer modified high strength cementitious tile adhesives for interior and exterior application. These products are applicable for both floor and wall tiles. They are designed for all types of dimensionally stable masonry substrates such as sand / cement render, precast concrete and plaster.

### Terragrout (G11, G14, G22)

A range of high quality, water resistant, anti-fungal, grouting compounds for filling and sealing of joints / grooves between ceramic tiles, clinkers, mosaics and marble. They are available in an exciting range of colours to compliment the latest trending tile colours.

Using tiles on floors and walls in different areas of a house or building can be the distinguishing feature of a renovation architecture or of a retrofit design. And it can do wonders in spaces like the patio or terrace as much as in a bathroom. When using tiles to recreate a style or restore a space, trust Terraco tile adhesives and grouts for quality assured tile installation and give lasting new life to outdated spaces and structures.

## Benefits of Tiling Solutions

- ▶ Excellent water resistance – Avoids water damage to structures
- ▶ Excellent adhesion – Forms a strong bond between substrate and tiles avoiding the need for constant repairs
- ▶ Excellent for tile-on-tile application which saves time and money



**Excellent water resistance**



**Excellent adhesion**



**Excellent for tile-on-tile application**



Terrafix was used for tile-on-tile application during the renovation of Dunes Club Amman in Jordan. This solution saved a lot of time & cost involved with old tile removal due to its strong adhesion between substrates.



# CONCRETE REPAIR

Over a period of time, different cracks and other damages occur on concrete substrates. Terraco offers a comprehensive range of quality surface preparation materials specifically designed and formulated for use on all types of construction substrates prior to decoration.

Terraco's concrete repair products are designed to repair and reface concrete, these shrinkage compensated concrete repair compounds are produced to the strictest quality standards ensuring uncompromising performance in the most demanding applications.



## Our Product Range

Some of the products that are used are as below:

### Terraroc (MBR, HBR, FMR)

A range of quality repair mortars that can be applied in various layers of thicknesses. Ideal for repairing degraded and spalled concrete.

### Terrascreed (GP100, HS100, HB100)

A functional range of high performance, self-levelling floor compounds used to create a flat and smooth surface prior to the application of the final floor finishes. They have a compressive strength similar or higher to traditional concrete prior to installing interior floor coverings.

### Terraflow (NS40, NS60 and NS80)

A range of general purpose non-shrink grouts designed for different performance requirements. The range is designed for shrinkage compensated repairs and is best suited for narrow void grouting, flow screeds and anchoring of a wide variety of fixings.

### Terramix (Fine, Standard, Coarse)

A range of repair mortars designed for surface concrete repairs and finishing applications.

### Terrabond (AC100, AC 200, AC300, E100, E200, E300)

A range of extremely versatile bonding agents for use on various substrates.

### Terralatex (S100, S200, S300)

A range of versatile bonding agents and admixtures used to improve adhesion and strength of cementitious compounds.

## Benefits of Concrete Repair

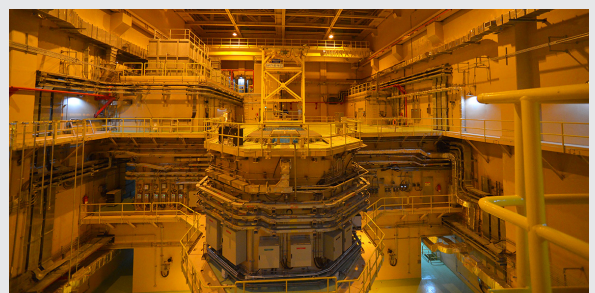
- ▶ Excellent for Repairs
- ▶ Excellent Durability



*Excellent for repairs*



*Excellent durability*



Terraroc concrete repair was used in Jordan Reactor for Research and Training project. Terraroc is developed for use in a wide range of applications and provides excellent long term durability.



# SPORTS FLOORING SYSTEMS

## Areas of use

- ▶ Tennis courts
- ▶ Basketball courts
- ▶ Badminton courts
- ▶ Volleyball courts
- ▶ Five-a-side football
- ▶ Handball courts
- ▶ Bicycle paths
- ▶ Walking and jogging paths
- ▶ School playgrounds
- ▶ Median strips
- ▶ Golf cart paths



Terraco has been at the forefront of developing environmentally friendly sports flooring systems which are perfectly suited for renovating worn out sports areas.

### Flexipave Sports Flooring Systems

These systems consist of a range of products developed for various sports surfaces which offer the best solution for an excellent playing standard, safety for the players and a long-lasting surface. The cushioning coats of these systems are made of recycled materials. These water-based products use acrylic resin technology to avoid any harmful effects on the environment.

## Benefits of Sports Flooring Systems

- ▶ Long lasting – Resists the effects of heavy use
- ▶ Versatile application – For indoor and outdoor surfaces
- ▶ Not affected by temperature extremes
- ▶ Low maintenance requirement – Fade-free colours



**Excellent durability**



**Versatile applications**



**Excellent weather and UV resistance**



Flexipave System was used in several projects in Turkey - Konya Selçuklu Municipality Hayat Park and Izmir Aliaga Petkim Socar Facilities. The products used are Flexipave Cushion, Flexipave Smooth and Flexipave Line Paint.



# LANDSCAPING

Terraco offers an excellent renovation solution for landscaping. Terraco's Addagrip range of quality resin surfacing flooring and landscaping systems are suitable for pedestrian and vehicular traffic. These systems are a perfect solution for renovating walkways and driveways across a wide range of ground surfaces.

## Our Product Range

Addagrip Surfacing Systems are resin bound and porous, allowing water to percolate through the surface when a suitable porous base build-up is configured for Sustainable Urban Drainage Systems (SuDS).

### Addagrip Crystal

A natural clear resin system incorporating natural aggregates.

### Addagrip Amber

A resin system incorporating natural aggregates where the colour is enhanced in the initial curing process.

### Addagrip Tree Pit

The system with a mix of 6-10mm aggregates and resin creates a porous surface around the base of a tree.

## Addagrip Resin Bound Surfacing Systems are suitable for

- ▶ Car Parks
- ▶ Access Roads
- ▶ Driveways & Pathways
- ▶ Cycle Tracks
- ▶ Swimming Pool
- ▶ Surrounds & Tree Pits
- ▶ Theme Parks
- ▶ Landscaping
- ▶ Playgrounds
- ▶ Courtyards
- ▶ Patios
- ▶ Concrete Bridges
- ▶ Wood Bridges
- ▶ Steel Bridges
- ▶ Logos



## Benefits Landscaping Systems

- ▶ Avoids water stagnation – Porous surface lets water drain through
- ▶ Long lasting – Excellent durability & UV stability
- ▶ Low Maintenance
- ▶ Good slip resistance
- ▶ Fast installation
- ▶ Seamless finish



*Long lasting*



*Fast installation*



*Low maintenance*



*Avoids water stagnation*



Anfield, Liverpool Football Stadium was a project in UK which used Addagrip. The product has met rigorous performance and aesthetic requirements of the stadium and has exceeded expectations.



[www.terraco.com](http://www.terraco.com)

SWEDEN • UK • IRELAND • RUSSIA • TURKEY • ALGERIA • EGYPT  
SOUTH AFRICA • JORDAN • UAE • THAILAND • VIETNAM • CHINA • KOREA